

Electromagnetic Single-Face Brake

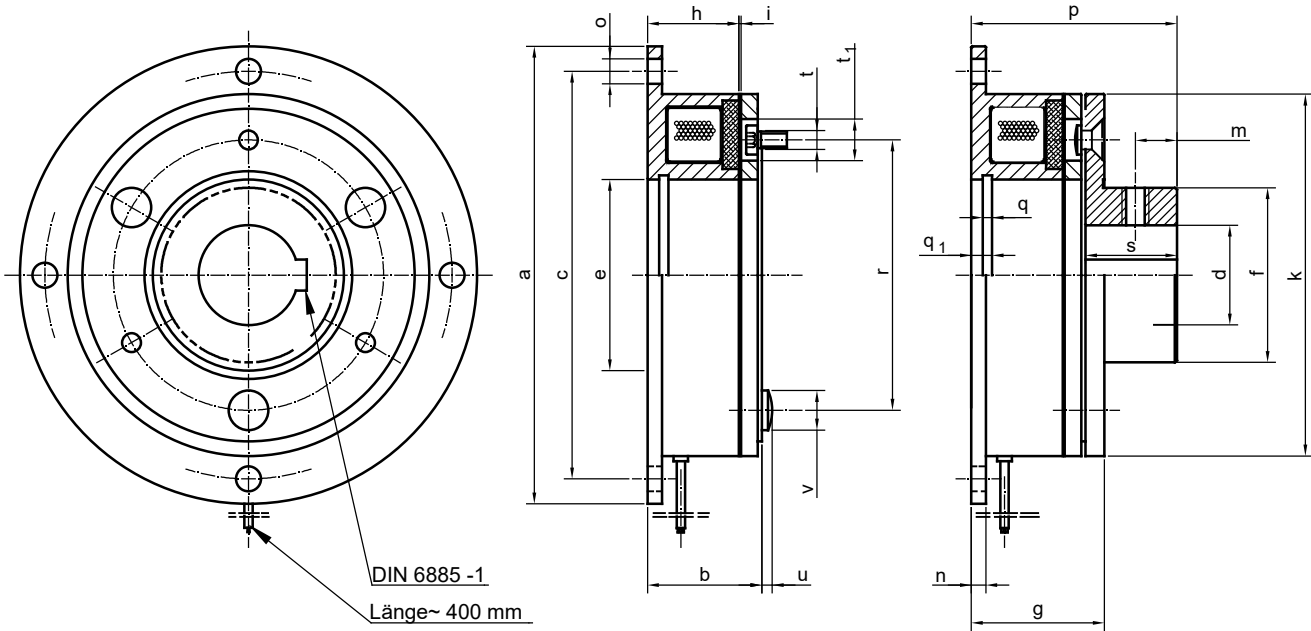
Flange mounted brake with diaphragm plate to be connected to a shaft mounted driver.

For dry operation, coil voltage 24 V DC

- ◆ Friction locked torque connection without backlash.
- ◆ With diaphragm made of hardened spring steel.
- ◆ Self-acting adjustment by magnetic flux permeated friction faces.
- ◆ No idling torque because of complete disconnection when disengaged.
- ◆ Applicable for horizontal and vertical mounting.

When current is applied the armature plate is pulled against the magnet body resulting in a friction locked brake torque connection. When the current is switched off, the armature plate will be completely separated from the magnet body by the elastic force of the diaphragm.

Executions: MCB without driver and diaphragm fastening screws.
MCB with driver as shown in the dimension drawing.



DIN 6885 -1

Länge~ 400 mm

Data and Dimensions		MCB 0,6	MCB 1	MCB 3	MCB 5	MCB 10	MCB 20	MCB 40	MCB 60
Dynamic brake torque ¹⁾	Nm	6	12	25	50	100	200	400	600
Speed maximum	min ⁻¹	7000	6000	5000	4000	3000	2500	2000	1500
Coil power consumption at 20° C	W	11	16	21	27	37	46	60	80
Mass (weight) inclusive driver	kg	0,3	0,6	1,1	2	4	7	14	22
Ø a	mm	80	100	125	150	190	230	290	355
b	mm	22	24,5	27,9	31	35	41,4	47,9	60
Ø c	mm	72	90	112	137	175	215	270	335
Ø d max. H7	mm	17	20	30	35	40	60	80	100
Ø e H8	mm	35	42	52	62	80	100	125	160
Ø f	mm	28	33	43	50	66	84	106	135
g	mm	25,5	28,5	32,9	37	42	50,4	58,9	72
h	mm	18	20	22	24	26	30	35	44
i airgap	mm	0,2	0,2	0,2	0,3	0,3	0,5	0,5	0,5
Ø k	mm	63	80	100	125	160	200	250	320
m	mm	5	6	6	10	10	15	20	20
n	mm	3	3	4	4	5	5	6	6
Ø o	mm	4 x 4,5	4 x 5,5	4 x 6,6	4 x 6,6	4 x 9	4 x 9	4 x 11	8 x 12
p	mm	37	44,5	52,9	61	73	89,4	102,9	125
q / q ₁	mm	2 / 3,5	2,5 / 4,25	3 / 5	3,5 / 5,5	4 / 6	5 / 7	6 / 8	9 / 14
Ø r	mm	46	60	76	95	120	158	210	250
s	mm	15	20	25	30	38	48	55	55
Ø t / Ø t ₁	mm	3 x 3,1 / 6,3	3 x 4,1 / 8	3 x 5,1 / 10,5	3 x 6,1 / 12	3 x 8,2 / 15	3 x 10,2 / 18	4 x 12,2 / 22	4 x 16,2 / 28
Ø v / u	mm	3 x 5,5 / 1,6	3 x 7 / 1,8	3 x 9 / 2,4	3 x 10 / 2,8	3 x 13 / 3,2	3 x 16 / 4	4 x 20 / 4,3	4 x 26 / 5

1) Static brake torque ~ dynamic brake torque