

Electromagnetic Stationary Field Spring-Pressure Tooth Clutch

Clutch with driver plate to be attached to the free wheeling gear part.

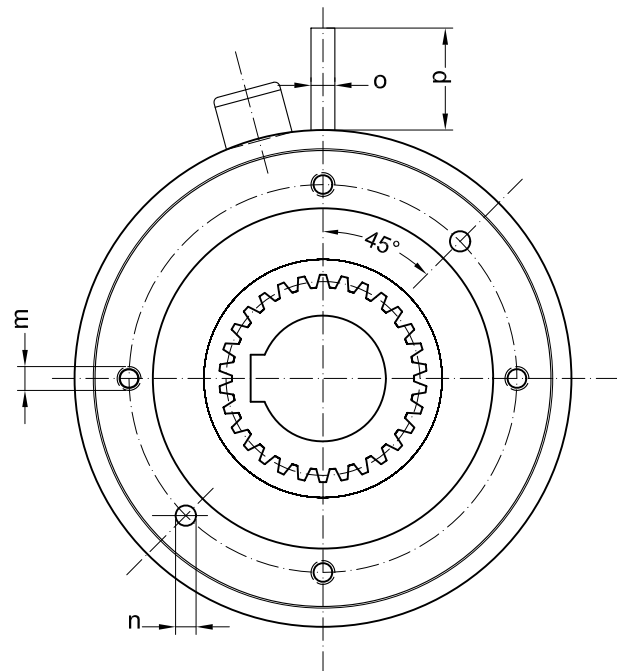
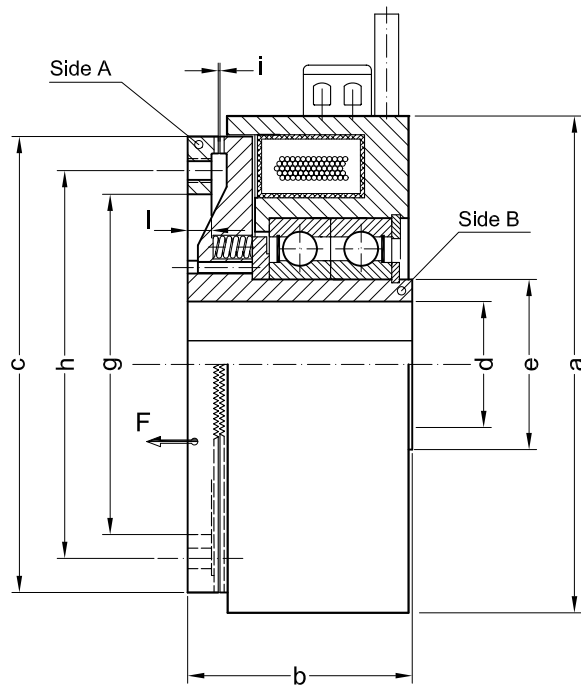
For oil and dry operation, coil voltage 24 V DC

- ◆ With point shaped backlash-free tooth profile.
- ◆ With face toothed armature plate guided on splined clutch hub.
- ◆ Version 1 - tooth angle 55° for disengagement under torque load.
- ◆ Version 2 - tooth angle 35° for higher torque transmission, if disengagement without torque load takes place.
- ◆ Applicable for horizontal and vertical mounting.

Tooth mesh is effected after switching off the clutch coil at standstill.

With the coil switched off, the clutch remains mechanically closed by the force off the pressure springs.

Advantage is given by torque transmission independent of power supply. With the coil switched on, the armature plate is kept in mechanically released position by the magnetic force and a complete disconnection of the drive system is given.



Data and Dimensions			FOZ 5	FOZ 10	FOZ 20	FOZ 40	FOZ 80	FOZ 160	FOZ 315	FOZ 630	
Static torque continuous (static) torque load	Version	1	Nm	32	63	125	250	500	1000	2000	4000
		2	Nm	63	125	250	500	1000	2000	4000	8000
static torque fluctuating (dynamic) torque load	Version	1	Nm	25	50	100	200	400	800	1600	3150
		2	Nm	50	100	200	400	800	1600	3150	6300
Thrust force F maximum at static torque	Version	1	N	500	900	1400	2300	4000	6500	10000	17000
		2	N	300	500	900	1400	2300	4000	6500	10000
Spring pressure		N	200	330	500	880	1500	2500	4000	6500	
Speed maximum clutch released		min ⁻¹	5500	4000	3500	2100	1600	1000	680	400	
Coil power consumption at 20 °C		W	40	40	80	110	140	200	210	240	
Inertia moment side A		10 ⁻³ kgm ²	0,3	0,65	2,0	5,5	12,5	32,5	85	275	
Inertia moment side B		10 ⁻³ kgm ²	0,75	1,5	4,3	15	35	80	215	715	
Mass (weight)		kg	3,0	4,5	8,0	15	30	44	88	120	
Ø a		mm	106	126	159	194	234	282	350	425	
b		mm	48	56	66	80	95	112	130	170	
Ø c		mm	99	116	148	178	210	252	310	380	
Ø d H7		mm	25	35	45	60	70	90	110	130	
Ø e		mm	35	45	60	75	90	110	140	160	
Ø g H7		mm	73	85	110	135	160	195	240	290	
Ø h		mm	82	95	123	152	180	215	265	320	
i addendum distance		mm	0,20	0,20	0,25	0,30	0,30	0,35	0,40	0,50	
l		mm	6	7	9	11	13	16	18	25	
m		mm	M 4	M 5	M 6	M 8	M 10	M 10	M 12	M 16	
Ø n rough bored / for dowel		mm	4 / 5	5 / 6	7 / 8	9 / 10	10 / 12	10 / 12	14 / 16	16 / 20	
Ø o		mm	6	6	6	6	10	10	12	16	
p		mm	30	30	30	30	35	35	40	50	
Number of teeth - tooth angle 55°		-	203	232	253	322	272	335	299	377	
Number of teeth - tooth angle 35°		-	230	290	280	344	316	395	371	464	
Keyway DIN 6885 - 2		-	1	1	1	2	2	2	2	2	