

Electromagnetic Slip Ring Multi-Disc Clutch

SHEET 1

Clutch for shaft mounting, with recess on the front side.

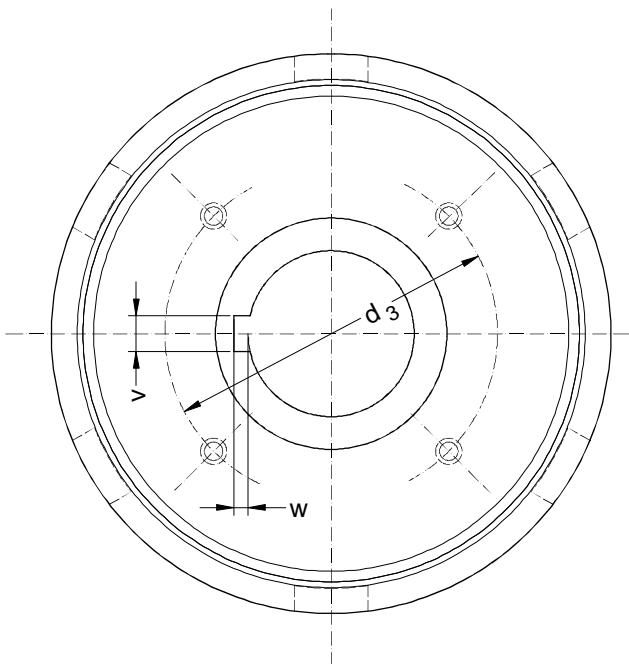
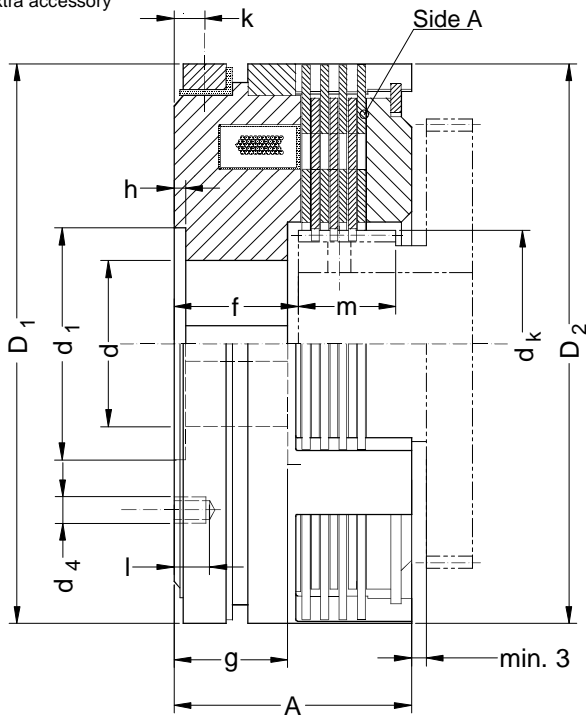
For oil operation, coil voltage 24 V DC

- ◆ Version without inner driver, with hardened steel discs.
- ◆ Torque transmission between shaft and inner driver *.
- ◆ Further technical particulars on request.
- ◆ For horizontal mounting.

* extra accessory

Heid multi disc clutches LCW-S are comparable regarding technical data and dimensions with multi disc clutches of ZF Friedrichshafen AG listed in the table

Most of the clutches LCW-S documented in the data sheet can be amended according to order specification and so brought into line with the version to be replaced.



Data and Dimensions		LCW	LCW	LCW	LCW	LCW	LCW	LCW	LCW	LCW	LCW	
		0,5S *	1,5S	3S1	3S2	5S	6S	12S1	12S2	12S3	30S1	
comparable to ZF Type:		EK 0,5	EK 1	EK 2	EK 2 d	EK 5	EK 5 d	EK 10	EK 10 d	EK 10 e	EK 20	
Static torque	Nm	7	20	36	50	100	100	200	200	200	410	
Dynamic torque	Nm	5	10	20	20	55	55	110	100	100	230	
Speed at 10 m per sec. ¹⁾	min ⁻¹	2700	2300	2050	2200	1750	1650	1500	1400	1350	1250	
Engagement time	ms	120	170	220	220	280	280	360	360	360	450	
Disengagement time	ms	40	50	70	70	100	100	110	110	110	200	
Coil power consumption at 20 °C	W	10	15	17	18	20	22	29	29	27	37	
Mass moment of inertia side A	10 ⁻³ kgm ²	0,25	0,58	0,99	1,2	2,4	3,1	6,0	7,3	8,7	13,1	
Mass (weight) ~	kg	0,46	0,77	1,03	1,21	2,11	2,18	4,34	3,75	3,90	5,80	
A	mm	23	29,5	32	36	47,5	45,5	55	52	52	54	
ø D ₁	mm	70	82	92	95	106	114	126	134	140	152	
ø D ₂	mm	70	80	90	93	106	114	126	134	140	152	
ø d H7	mm	15	20	22	28	22	35	25	40	50	40	
ø d ₁	mm	27	36	37	42	38	52	44	60	70	60	
ø d ₃	mm	32	41	45	50	50	60	60	72	80	75	
d ₄	mm	M4	M4	M6	M6	M6	M6	M8	M8	M8	M10	
f	mm	16	18,5	20	23	28	26	32	29	29	28	
g	mm	14	16,5	18	20	25	23	29	26	26	25	
h	mm	1,5	1,5	1,5	1,5	2	2	2	2	2	2,5	
k	mm	3,5	5,5	5,5	5,5	6	6	7	7	7	7	
l	mm	6	10	10	10	12	12	15	15	15	15	
m min	mm	7	9,5	10,5	12	18,5	18,5	21,5	21,5	21,5	23,5	
v x w	DIN 6885 - 2	mm	5 x 1,3	6 x 1,7	6 x 1,7	8 x 1,7	6 x 1,7	10 x 2,1	8 x 1,7	12 x 2,1	14 x 2,6	12 x 2,1
Inner driver gear acc. DIN 867 α = 20°	Number of teeth	-	15	20	27	19	27	18	28	31	21	
	Modul	mm	1,5	1,5	1,5	1,5	1,75	1,75	2	2	2,5	
	Tooth width of	mm	7,28	11,39	11,43	16,38	13,76	19,12	15,83	22,01	22,10	19,75
	Tooth width to	mm	7,23	11,34	11,38	16,33	13,71	19,07	15,78	21,96	22,05	19,69
	over teeth	-	2	3	3	4	3	4	3	4	4	3
	dk -0,2 addendum - ø	mm	24,25	32,2	35,2	43,5	35,8	50,5	40,0	60,5	66,4	58,0

* ONLY ON REQUEST

1) Higher speeds when fitting a second brush.