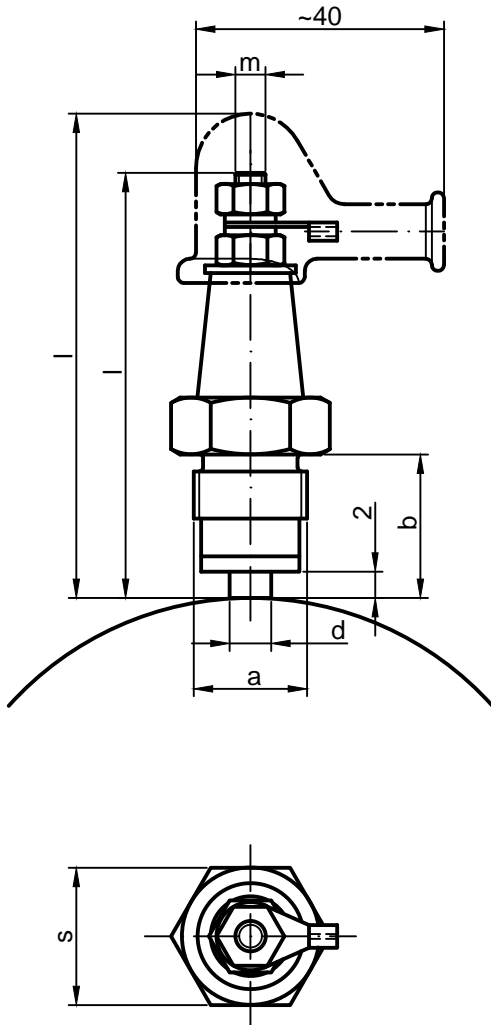


Tubular Brush Holders

With brushes for oil or dry operation.



Tubular brush holders with the appropriate brushes can be used for oil and dry operation. For oil operation, an additional blind brush has to be provided before or after the current supply for rotational speeds of more than 15 m/s, with erratic run, heavy vibrations and exceeding of the max. current rate it is recommended to arrange two brushes offset 60° to 90° per slip ring and connect them electrically. For clutches with one slip ring, the positive terminal has to be connected to the slip ring and the negative terminal to mass.

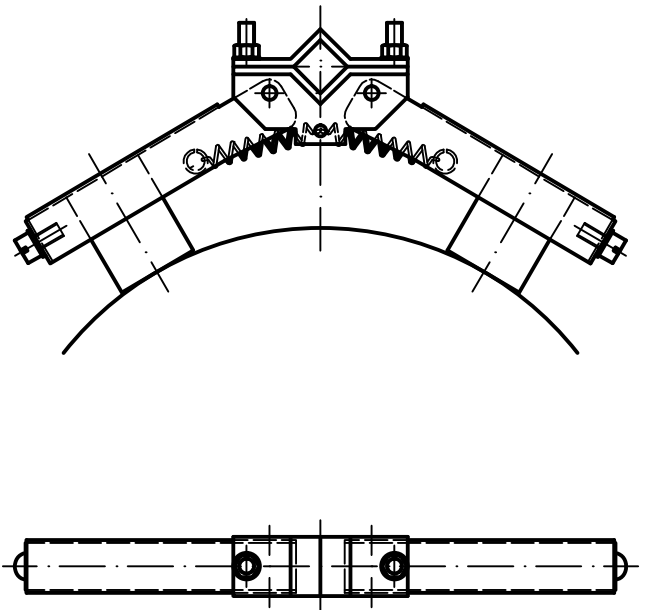


Twin Brush Holders

With carbon brushes for dry operation.



Twin brush holders are only to be used for dry operation. They are suitable for operational conditions with little vibrations at low and medium speed. The installation is carried out on an insulating coated stud.



Type		KB16/BN6 -22	KB16/TR6 -22	KB18/BN8 -22	KB18/TR8 -22
Brush oil / dry		Öl	Trocken	Öl	Trocken
max. velocity	m/s	20	40	20	40
max. current	A	6	4	10	8
Ø a	mm	M16 x 1,5	M16 x 1,5	M18 x 1,5	M18 x 1,5
b	mm	22	22	22	22
d	mm	6	6	8	8
l	mm	52	52	52	52
l1	mm	56	56	56	56
m	mm	M5	M5	M5	M5
s	mm	19	19	22	22

Twin Brush Holders
remainders on request