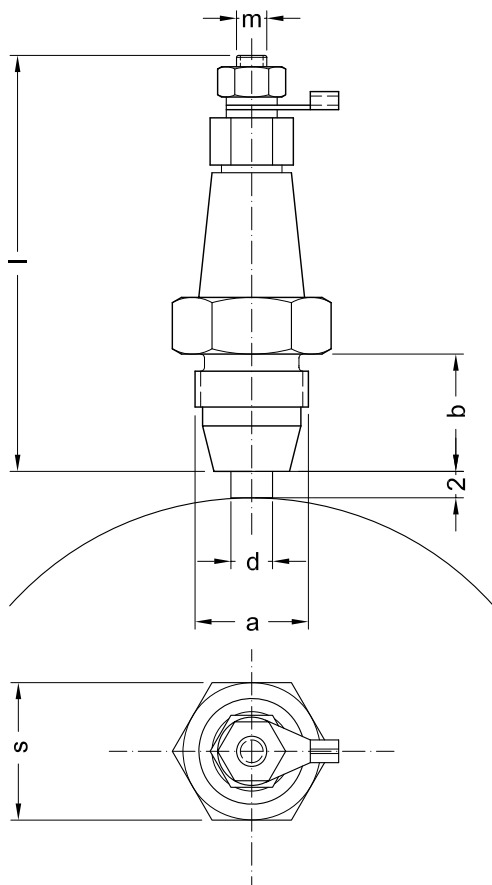


Tubular brush holders

- ◆ With brushes for oil or dry operation.

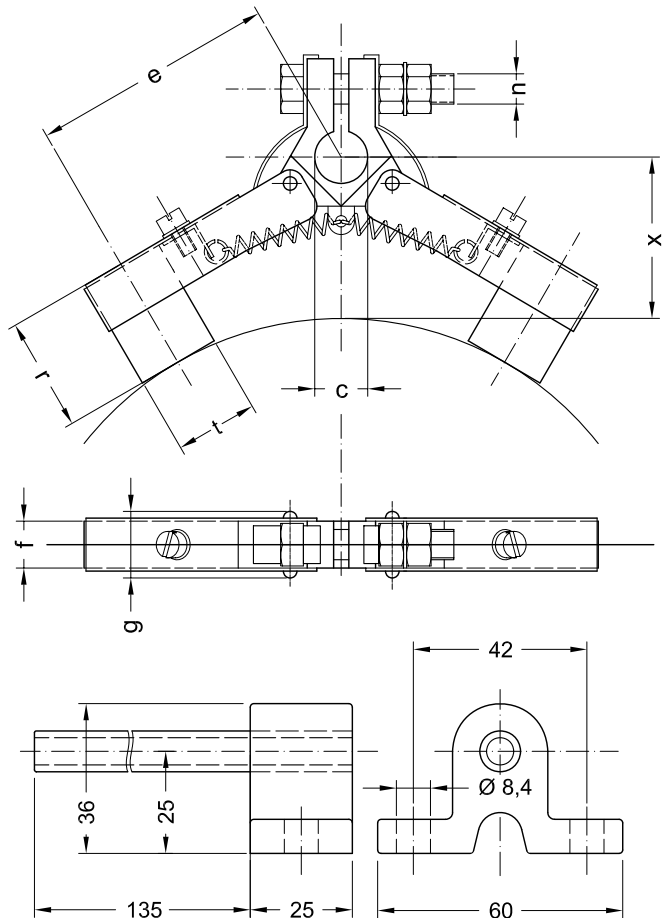
Tubular brush holders with the appropriate brushes can be used for oil and dry operation. for oil operation, an additional blind brush has to be provided before or after the current supply for rotational speeds of more than 15 [m/s]. with erratic run, heavy vibrations and exceeding of the max. current rate it is recommended to arrange two brushes offset 60° to 90° per slip ring and to connect them electrically. For clutches with one slip ring, the positive terminal has to be connected to the slip ring and the negative terminal to frame.



Twin brush holders

- ◆ With carbon brushes for dry operation.

Twin brush holders are only to be used for dry operation. They are suitable for operational conditions with little vibrations at low and medium speed. The installation is carried out on an insulating coated stud, which can be supplied including the mounting block shown below in the drawing. Care should be taken to keep proper slip ring distance "x" depending on slip ring's diameter.



Type		KB 14/4	KB 16/6 1)	KB 18/6 1)	Type		DSB 5	DSB 6	DSB 8
Brushes	BN wet- TR dry operation	BN4	TR4	BN6 TR6	BN6 TR6	Carbon brushes	dry operation		
Max. current	A	3	2	6	4	6	4	6	4
Max. speed	m/s	20	40	20	40	20	40	20	40
Contact force	N	10	2,5	20	3,5	20	3,5	20	3,5
Ø a	mm	M14 x 1,5	M16 x 1,5	M18 x 1,5	Ø c	mm	9	9	9
b	mm	15	20	19	e	mm	35	40	50
d	mm	4	6	6	f	mm	5	6,3	8
l	mm	54	65	65	g	mm	9	10	12
m	-	M4	M5	M5	n	-	M4	M4	M6
s	mm	17	19	22	r	mm	12,5	16	20
					t	mm	10	12,5	16
					D	mm	100 200	100 200 300	200 300 400 500
					x bei Ø D	mm	20 17,5	25 22,5 21	31 29 28 27

1) Tubular brush holders with longer brush guide tube and the appropriate brushes available on request.